



GMT MONTHLY MEMBERSHIP PROGRESS REPORT

Results as of: 4/30/2019

Multiple District 22

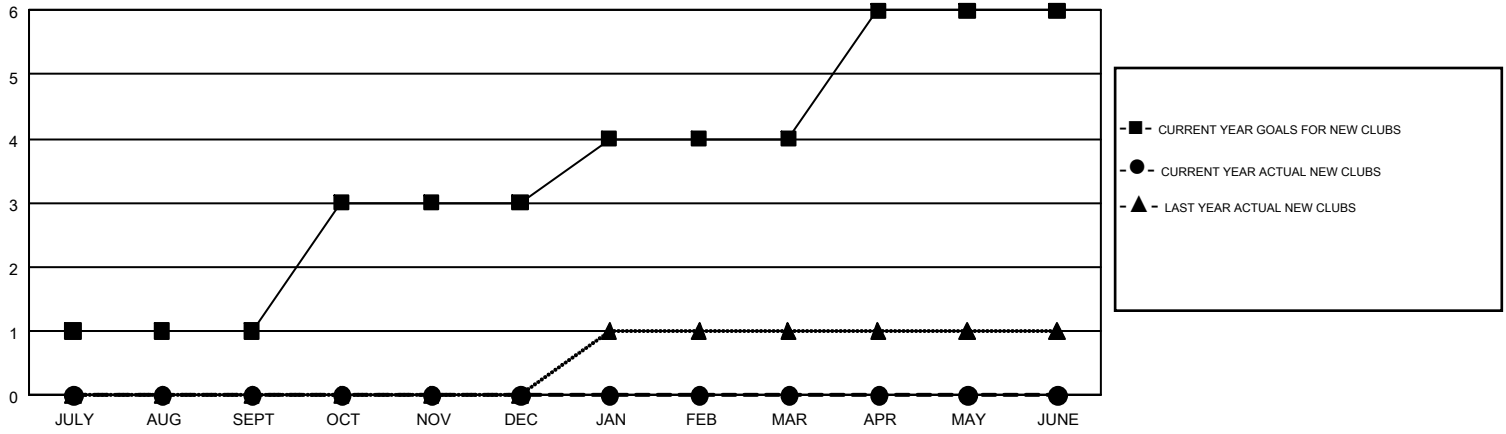
LOCATION: MARYLAND

GMT: MAHESH CHITNIS

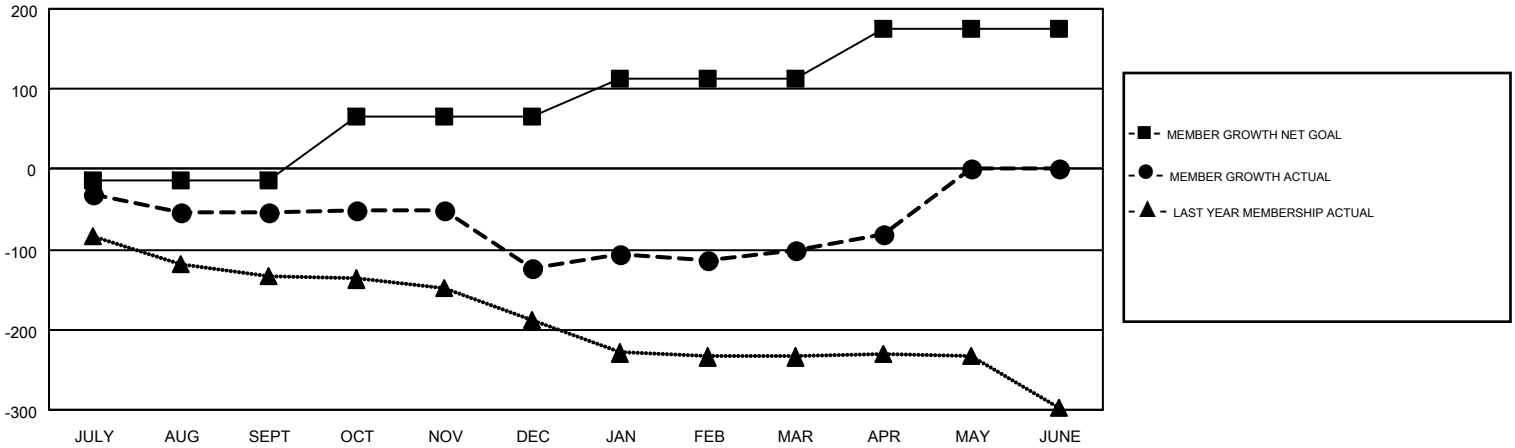
GMT CA 1

Clubs				Members			
RESULTS FOR 2018-2019				RESULTS FOR 2018-2019			
QUARTER	NEW CLUB GOAL	NEW CLUBS	DROPPED CLUBS	QUARTER	MEMBER GROWTH NET GOAL	MEMBER GROWTH ACTUAL	DROPPED MEMBERS ACTUAL (including transfers)
JULY/AUG/SEPT	1	0	1	JULY/AUG/SEPT	-15	115	151
OCT/NOV/DEC	2	0	0	OCT/NOV/DEC	80	120	174
JAN/FEB/MAR	1	0	0	JAN/FEB/MAR	47	151	112
APR/MAY/JUNE	2	0	1	APR/MAY/JUNE	63	75	52

GOALS AND ACTUAL NEW CLUBS CUMULATIVE



GOALS AND ACTUAL MEMBERS CUMULATIVE



DROPPED CLUBS: 2	121 CLUBS OF 214 ADDED 1 OR MORE NEW MEMBERS	<u>GENDER DISTRIBUTION</u>	
<u>DROPPED MEMBERS</u>		MALE	4,367 (66.70%)
DECEASED	114	FEMALE	2,180 (33.30%)
CLUB CANCELLED	6	TOTAL FAMILY UNIT MEMBERS	
OTHER	369	1,270	
TOTAL	489	FAMILY MEMBERS PAYING HALF DUES	
		656	

[CLICK HERE FOR CUMULATIVE MEMBERSHIP DATA](#)